

The background of the slide features a dark blue and purple color scheme with various financial charts. There are line graphs with blue and yellow lines, and candlestick charts. Numerical values are scattered across the background, including 1.7900, 1.7855, 1.7810, 14.56, and 19.00. The overall aesthetic is professional and data-oriented.

**IFTA** WEBINARS

# Crush it With Clouds

Presenter: **Sankar Sharma**  
Market Strategist, Global Trader & Trading Coach  
**RiskRewardReturn.com**

---

# Would You Love To Be Able To Spot **Under 5 Minutes**



- **Trend and Direction**
- **Momentum and Strength of Momentum**
- **Entries and Exits**
- **When To Add to a Winning Position**
- **How To Spot Hidden Resistances and Supports**
- **Where To Place Stops ?**



# **Crush It** **With Clouds**

- Sankar Sharma



# Important Notice

Materials Shared Here Are Property of RiskRewardReturn.com and are protected by copyright laws. Reuse, Reproduction, copying any or part of the material is strictly prohibited.

Any Stocks/Asset classes/Instruments mentioned here are NOT a recommendation to buy or sell they are for educational purposes only. Any type of investment will have Risk associated with it. Trading and Investing in Financial markets involves risk too. You are responsible for your own investing and trading decisions. Terms and conditions , privacy policy and subscriber agreement applies for this webinar too. Your results may vary and differ .

We reserve the right to ban any or all who violate the terms, conditions and guidelines from this and future presentations.

RiskRewardReturn.com is not a registered Investment Advisor, or a Broker/Dealer, and does not provide investment advice or recommendations. Subscribers to our Services and products are advised that the information, opinions, and analysis included there are based in good faith on sources believed to be reliable, but no representation or warranty, expressed or implied, is made as to their accuracy, completeness, or correctness.

Past performance is not necessarily indicative of the future performance of stocks mentioned either on the site or in our presentations. Neither these postings nor emails, nor any other information provided on our web sites, or through any other communication constitutes a recommendation to buy or sell stocks, or any other investment. Investing involves the risk of loss and readers are urged to consult with their own independent financial consultants.





# Disclaimer

**IMPORTANT NOTICE!** No representation is being made that the use of this strategy or any system or trading or investing methodology will generate profits. Past performance is not necessarily indicative of future results. There is substantial risk of loss associated with trading securities and options on equities. Only risk capital should be used to trade. Trading or investing securities is not suitable for everyone. Disclaimer: Futures, Stock, Options, and Currency trading all have large potential rewards, but they also have large potential risk. You must be aware of the risks and be willing to accept them in order to invest in these markets. Don't trade with money you can't afford to lose. This website is neither a solicitation nor an offer to Buy/Sell stocks, futures, options, or currencies. No representation is being made that any account will or is likely to achieve profits or losses similar to those discussed on this web site. The past performance of any trading system or methodology is not necessarily indicative of future results.

**CFTC RULE 4.41 – HYPOTHETICAL OR SIMULATED PERFORMANCE RESULTS HAVE CERTAIN LIMITATIONS. UNLIKE AN ACTUAL PERFORMANCE RECORD, SIMULATED RESULTS DO NOT REPRESENT ACTUAL TRADING. ALSO, SINCE THE TRADES HAVE NOT BEEN EXECUTED, THE RESULTS MAY HAVE UNDER-OR-OVER COMPENSATED FOR THE IMPACT, IF ANY, OF CERTAIN MARKET FACTORS, SUCH AS LACK OF LIQUIDITY. SIMULATED TRADING PROGRAMS IN GENERAL ARE ALSO SUBJECT TO THE FACT THAT THEY ARE DESIGNED WITH THE BENEFIT OF HINDSIGHT. NO REPRESENTATION IS BEING MADE THAT ANY ACCOUNT WILL OR IS LIKELY TO ACHIEVE PROFIT OR LOSSES SIMILAR TO THOSE SHOWN.**



# Agenda

- **Unleash The Power Of Ichimoku**
- **3 Strategies**
- **Q&A**



# Unleash The Power of Ichi



# Unleash The Power of Ichi

- **How To Spot Trend**
- **How To Spot Resistances and Support**
- **How To Spot Hidden Levels**
- **Measure of Momentum**
- **Entries and Exits**
- **When To Add**
- **Where To Place Stops**



# 4 Plots of Ichimoku

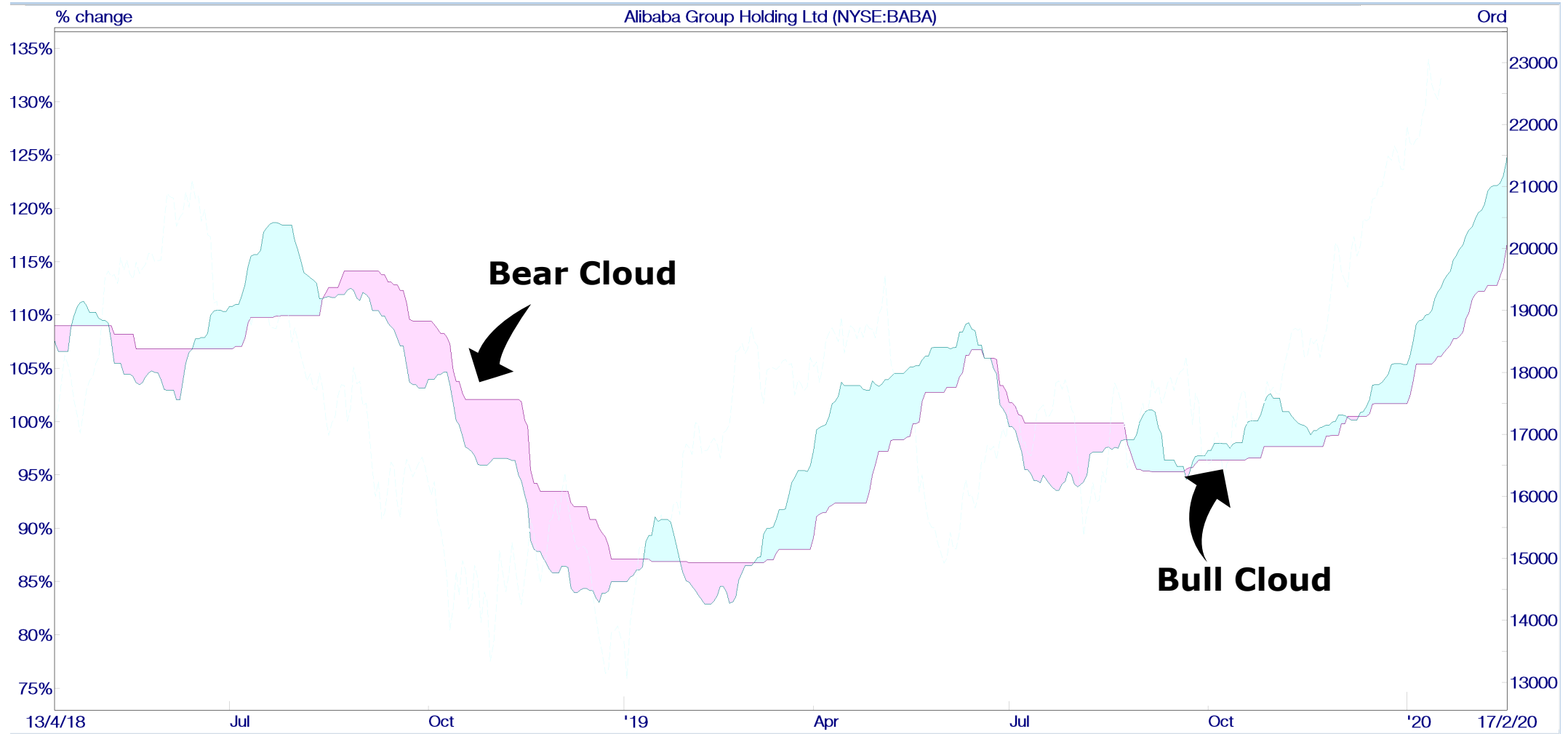
- **Cloud (Kumo)**
- **Turning Line / Conversion Line (Tenkan-sen)**
- **Base Line / Standard Line (Kijun-Sen)**
- **Delayed Line / Lagging Line (Chikou-span)**



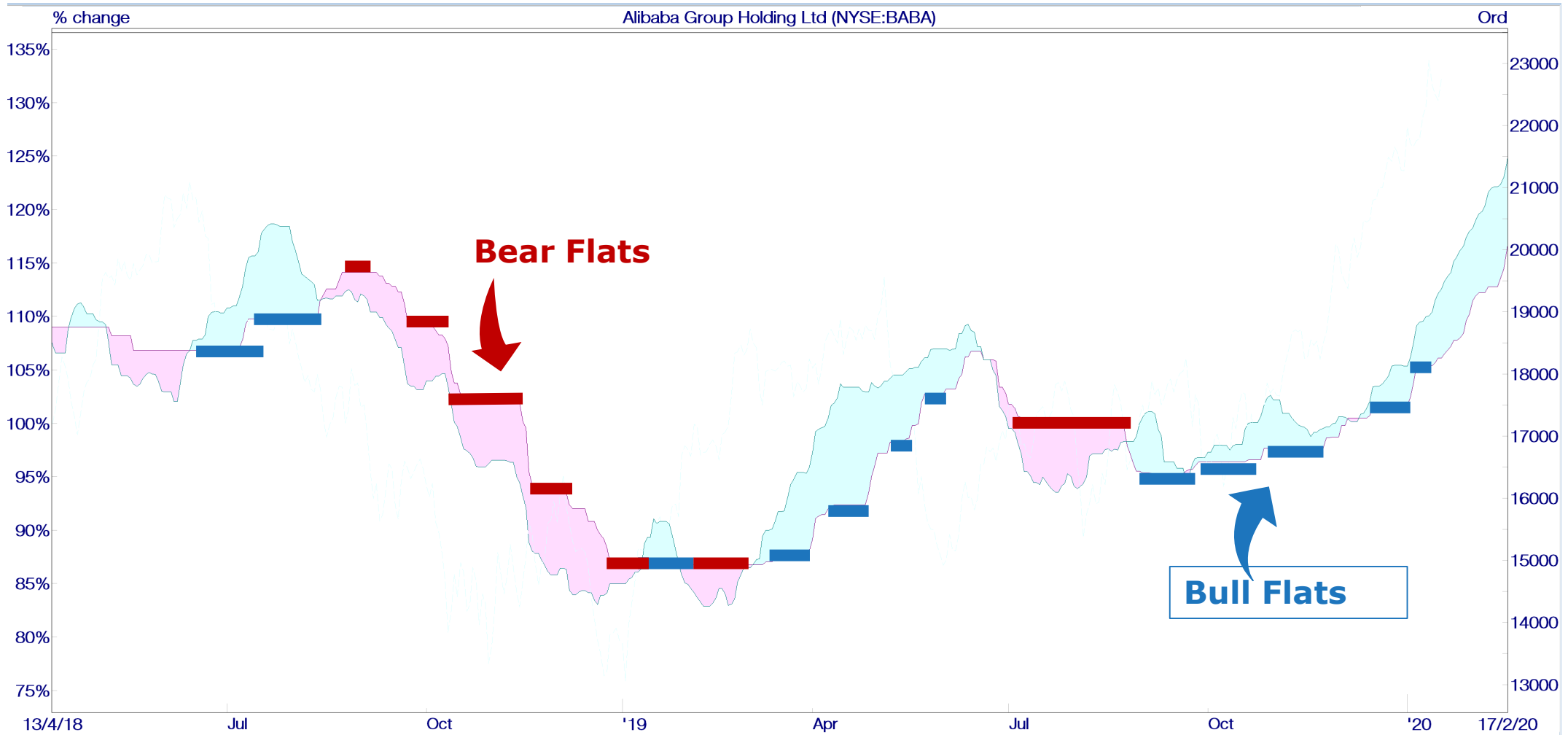
# Spotting Trend Using Ichi



# Bull vs. Bear Clouds



# Bear vs. Bull Flats





# Up Trend Confirmation





# What If Price Is Not Trending?



# Alternating Clouds – Sideways PA





# How To Spot Trend Change



# Spotting Trend Change With the Clouds

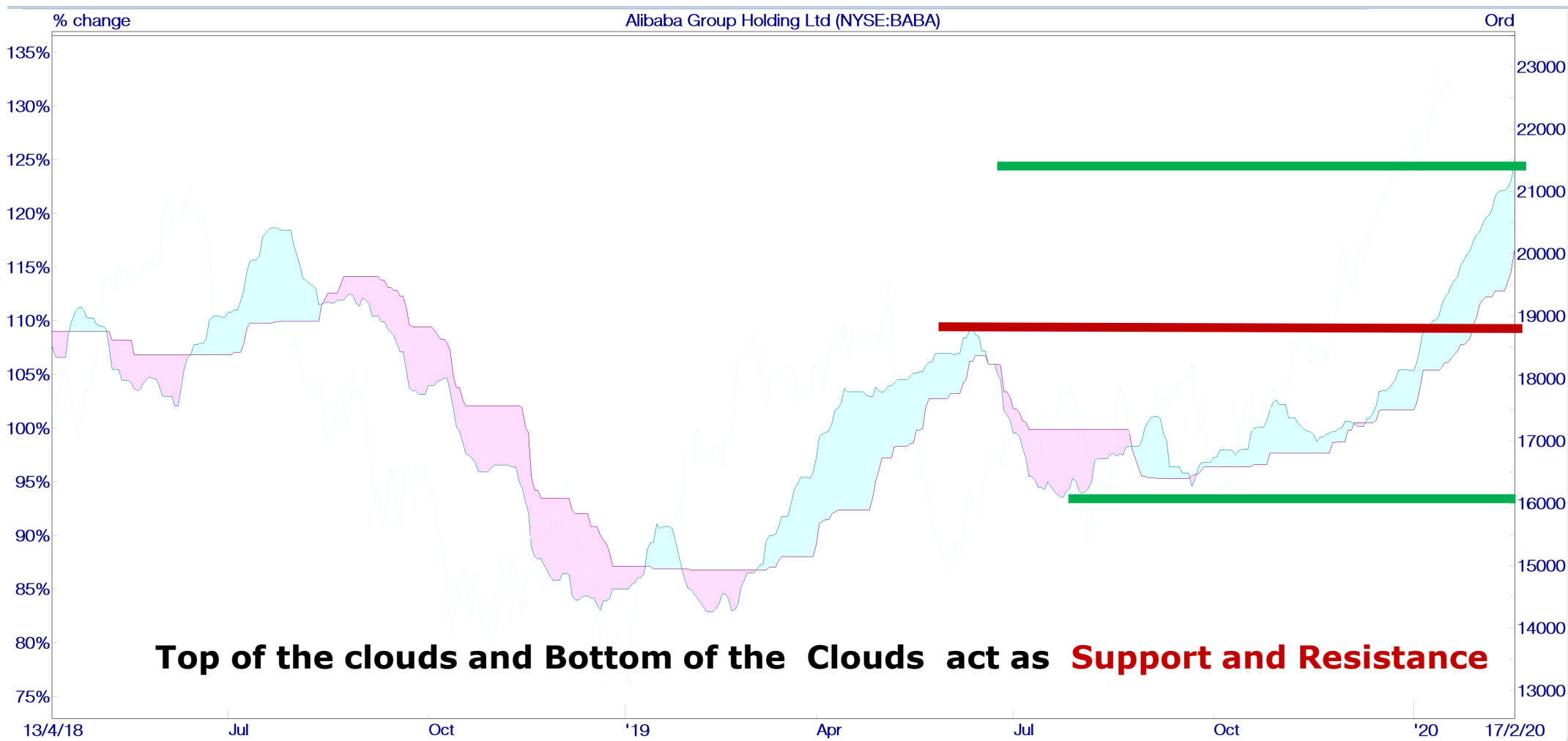




# How To Spot Support & Resistance Zones

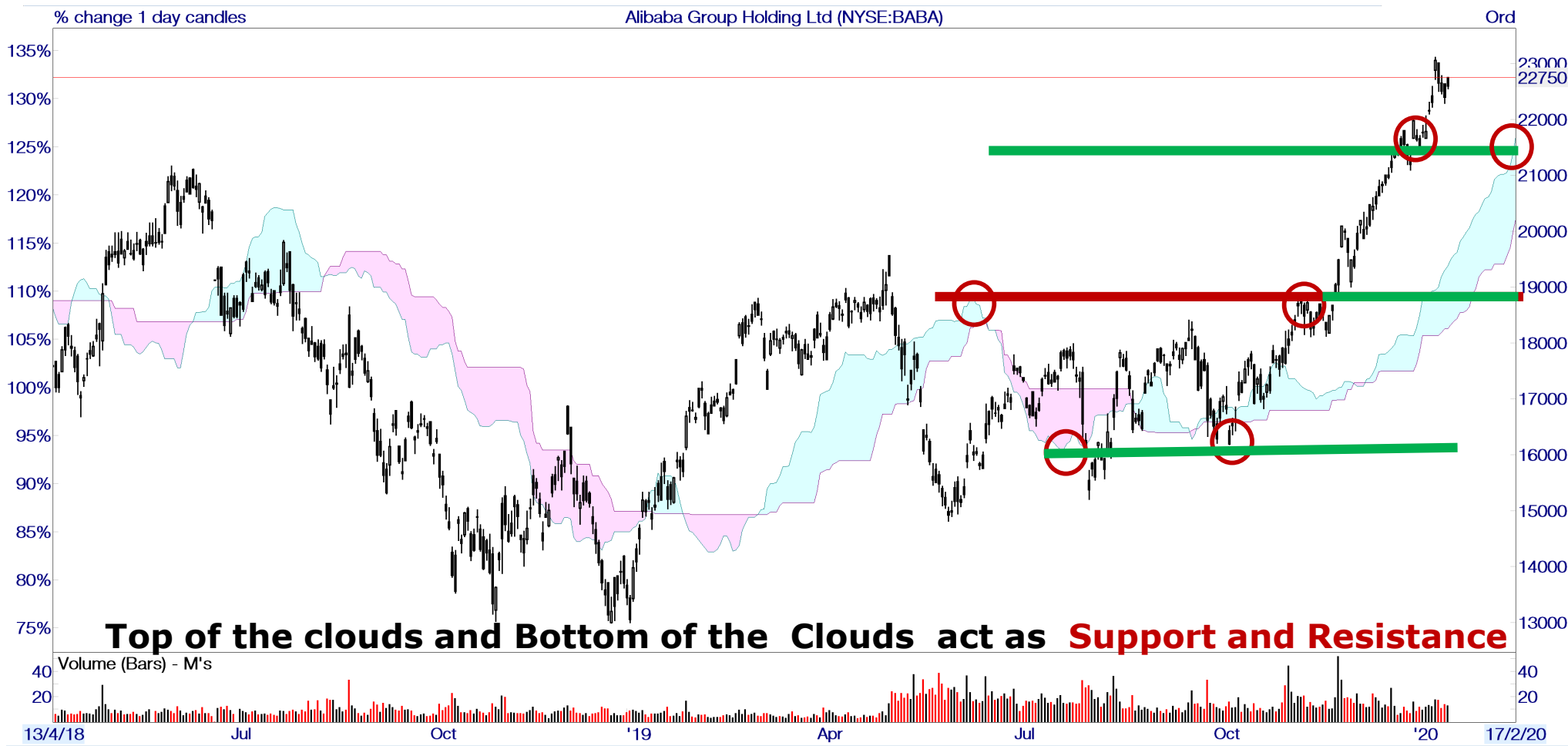


# Clouds: Tops and Bottoms S/R





# Did Price React At These Levels?



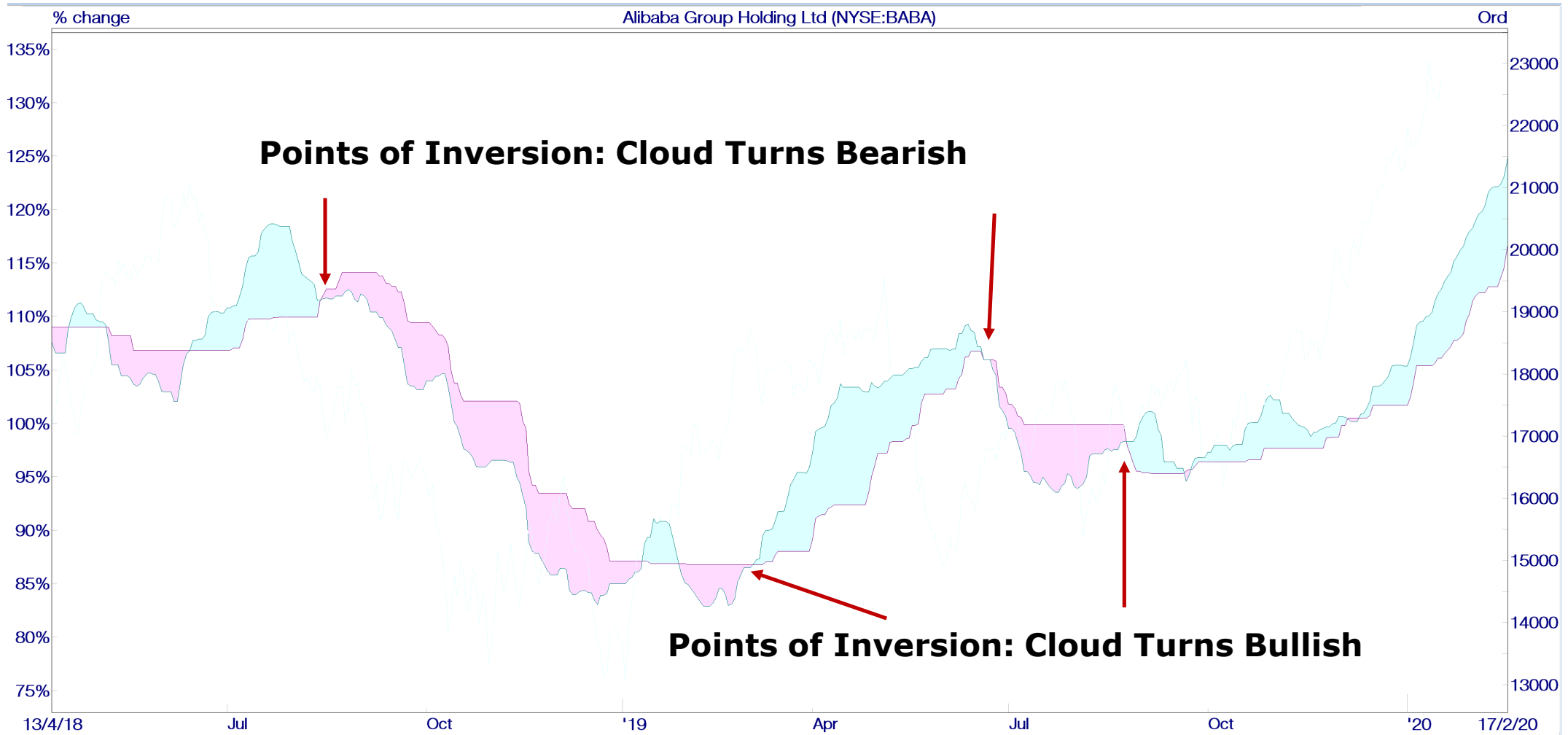




# Hidden Support & Resistance Zones

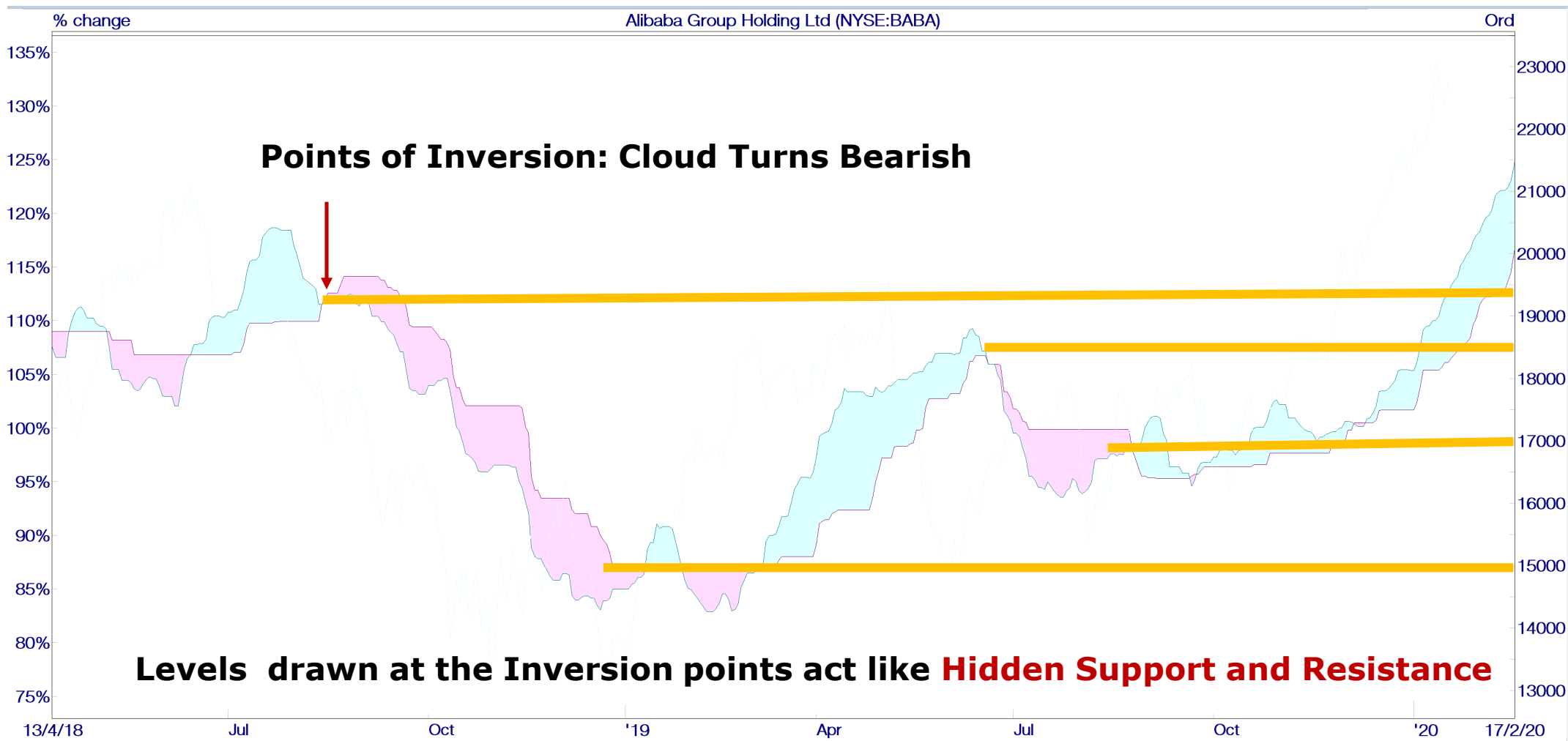


# Clouds: Points of Interest



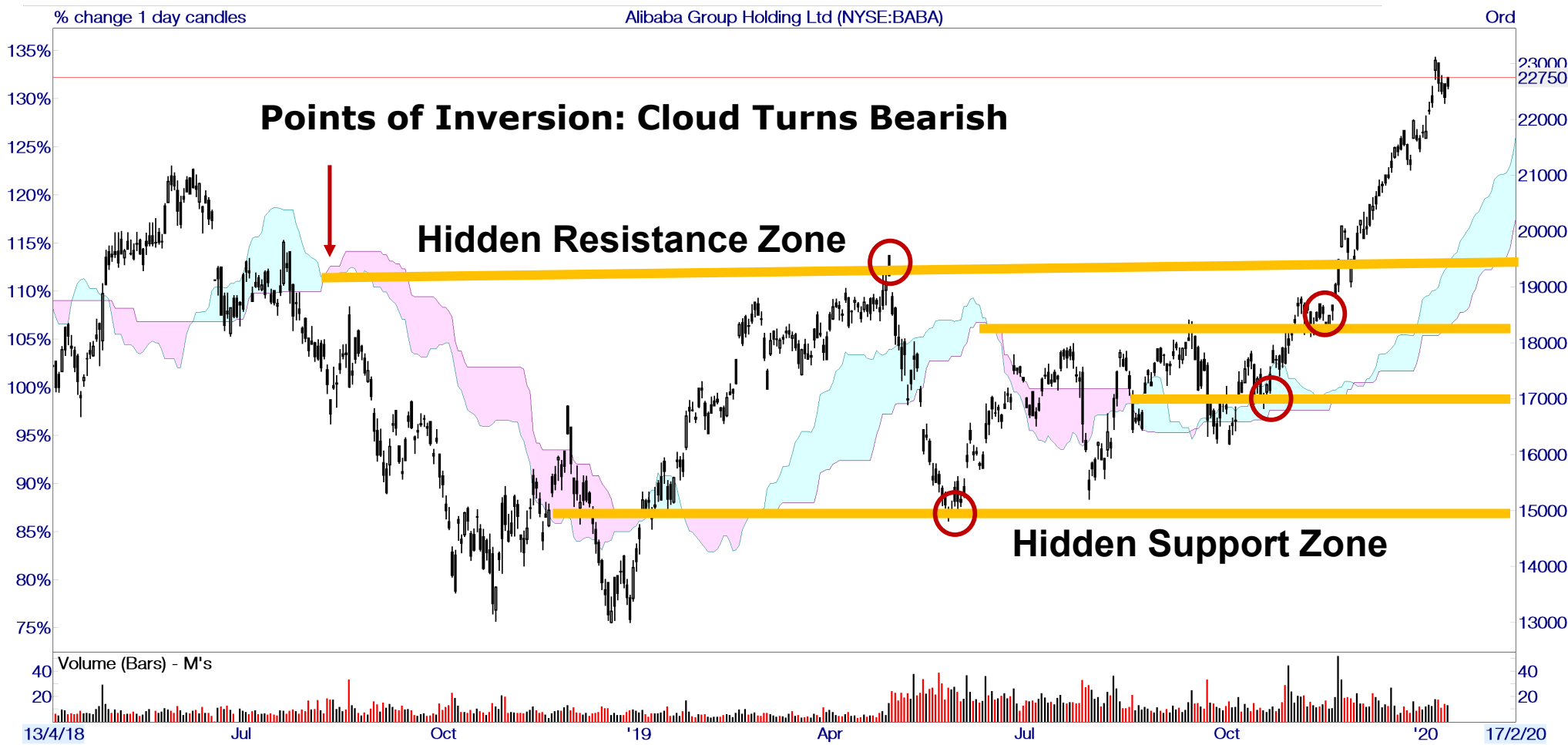


# Clouds: Inversion Points S/R





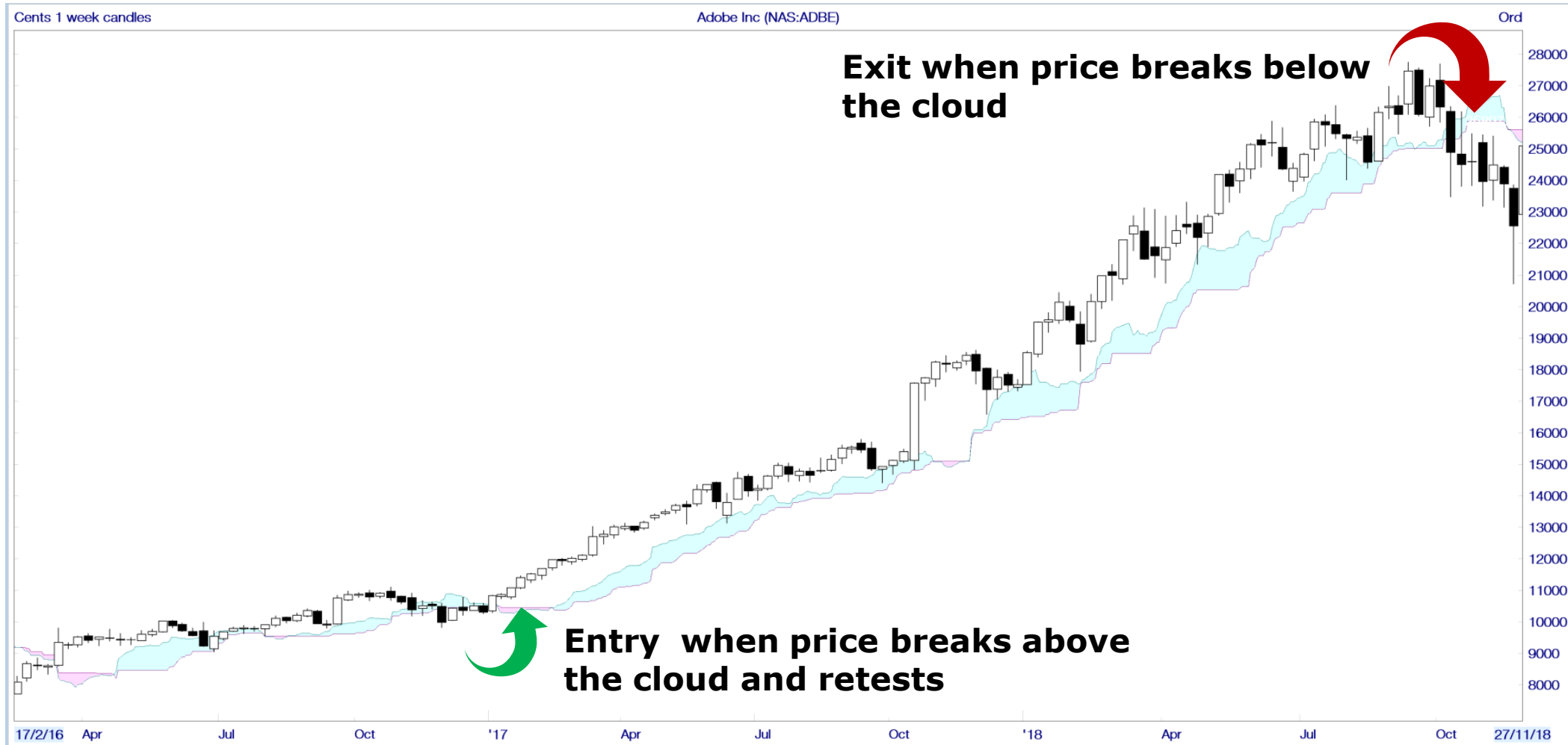
# Did Price React At These Levels?





# Entries and Exits

# Entry and Exit Using Price & Cloud

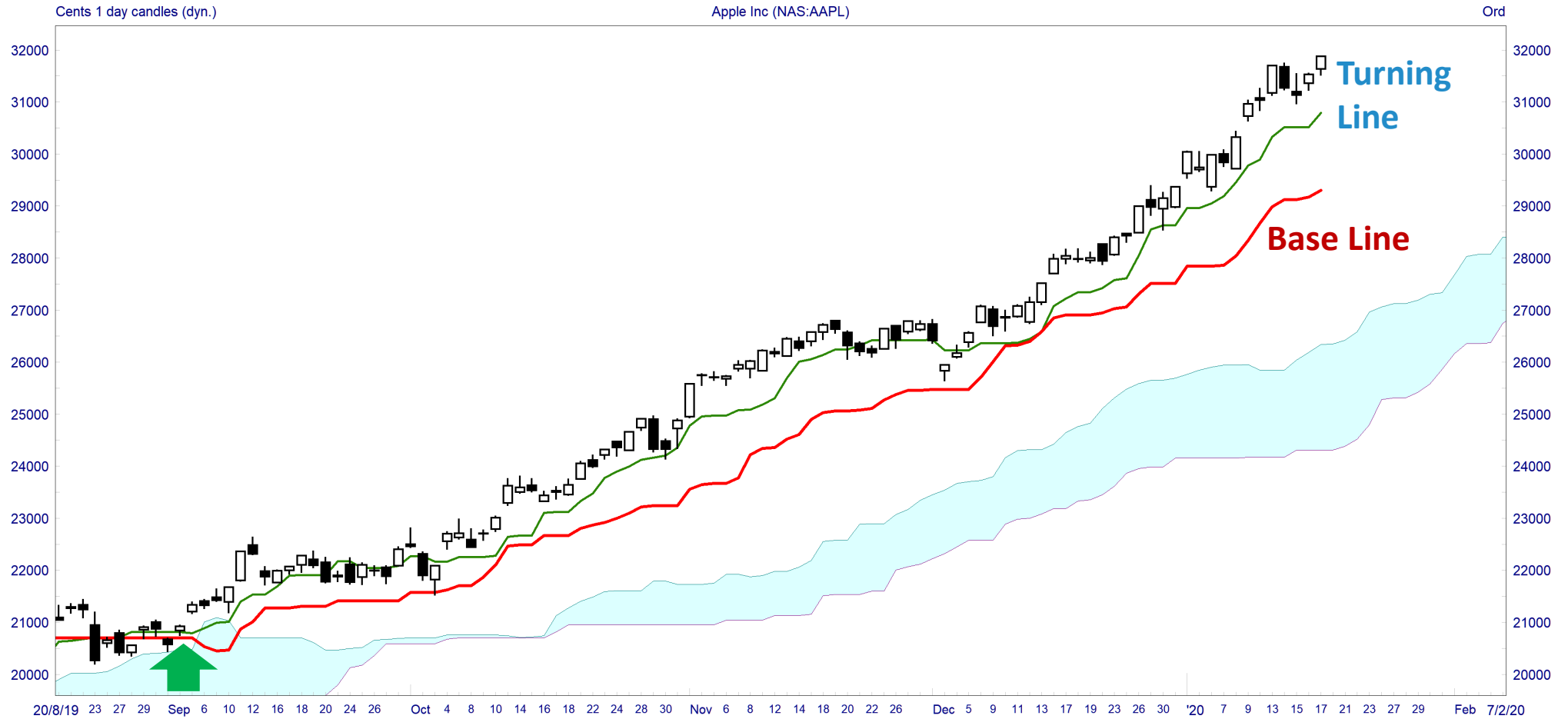


# Entry and Exit Using Price & Cloud





# Entry - Turning Crossing Up Base Line







# **3 Majestic Strategies for Measured Returns with Minimal risk**



# 3 Strategies

- **Rising Star**
- **Cloud Touch**
- **Cloud Clear**



# Strategies – Objective

- **Low Risk Precise Entry**
- **Measurable Reward**



**Any Results Shared Here Are Not For Show Off But  
To Show The Power Of The Ichimoku - Cloud Charts**



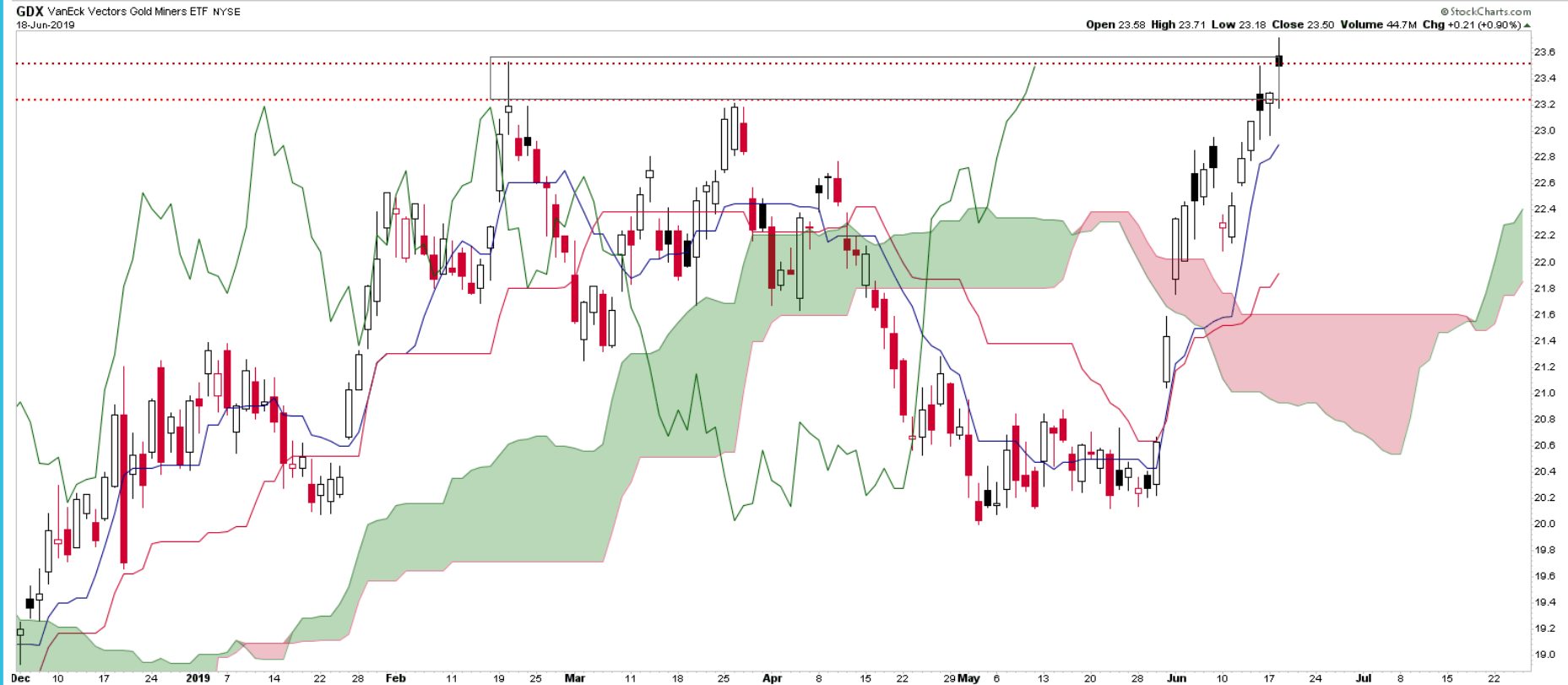
# Rising Star<sup>TM</sup> Strategy

# SETUP - VanEck Vectors Gold Miners ETF GDX

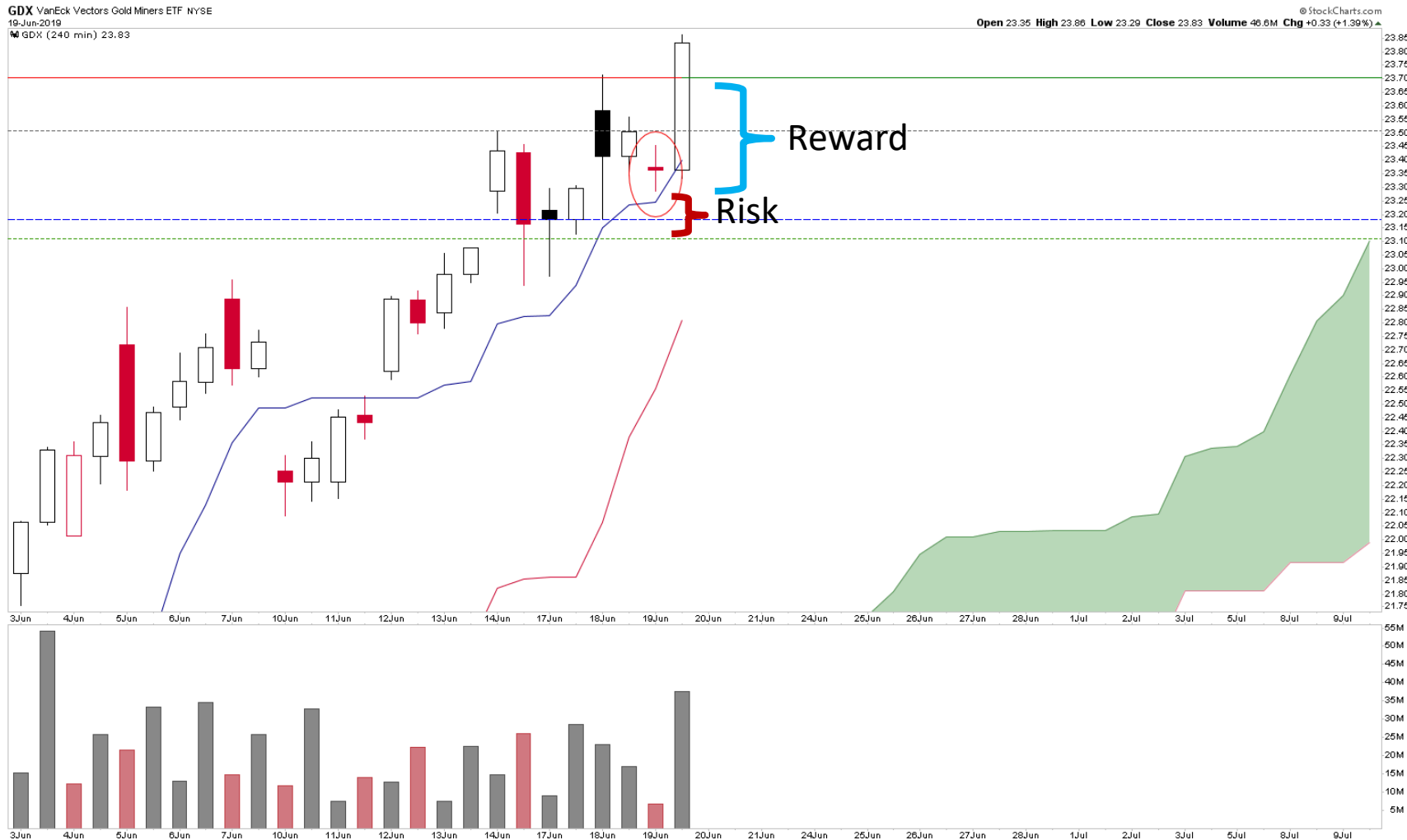


## SET UP ON DAILY CHART

1. Trend up - Cloud making new highs
2. Short term momentum stronger
3. Price above the cloud
4. Day Opened near the previous day close
5. Price failed to close above the nearest resistance.
6. Cloud Support nearby



# Trigger - VanEck Vectors Gold Miners ETF GDX



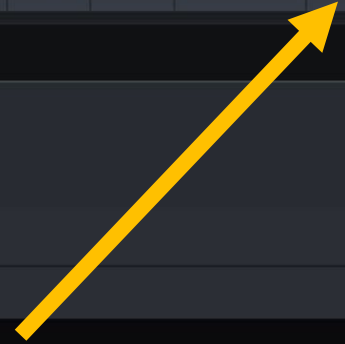
## SET-UP ON 4HR. CHART

1. Identify conservative support (top of the cloud ) and aggressive supports
2. Good Potential Reward with low probability risk
3. Demand as a confluence
4. In Up Trend with good Momentum

## TRIGGER ON 4HR. CHART

Entry when Price hits the Turning Line

# Result - VanEck Vectors Gold Miners ETF GDX



NEW YORK 6/19 12:50 Trade [Grid Icon] [Headset Icon] [Help Icon] Settings LIVE

POSITIONS x ORDERS x BALANCES x QUOTES x [Settings Icon] [Refresh Icon]

All Accounts Last Update: 6/19/2019 5:50:53 PM Updated every 10 seconds

| ACTION | SYMBOL            | DESCRIPTION  | OPEN P/L % | POSITION | QUAN |
|--------|-------------------|--|------------|----------|------|
| ↻      | GDX 190719C24     | VanEck Vctrs Gold Miners ETF [GDX] Jul 2019 24.000 Call  | 60.61%     | Long     |      |
| ↻      | CMCSA 190705C42.5 | Comcast Cl A [CMCSA] Jul 2019 42.500 Call                | 47.56%     | Long     |      |
| ↻      | MBT 190621C8      | Pub JointSt Mobile Telesystems [MBT] Jun 2019 8.000 Call | 27.27%     | Long     |      |
| ↻      | XLK 191018C85     | S&P Sel Tech Spdr Fd [XLK] Oct 2019 85.000 Call          | -25.00%    | Long     |      |

NEWS x MATRIX x

SYMBOL Last Net Chg

QUANTITY DURATION ACCOUNT

Buy Mkt Close Short Mkt

OPEN P/L ORDERS BID SIZE - PRICE + ASK SIZE





# Trend Continued...





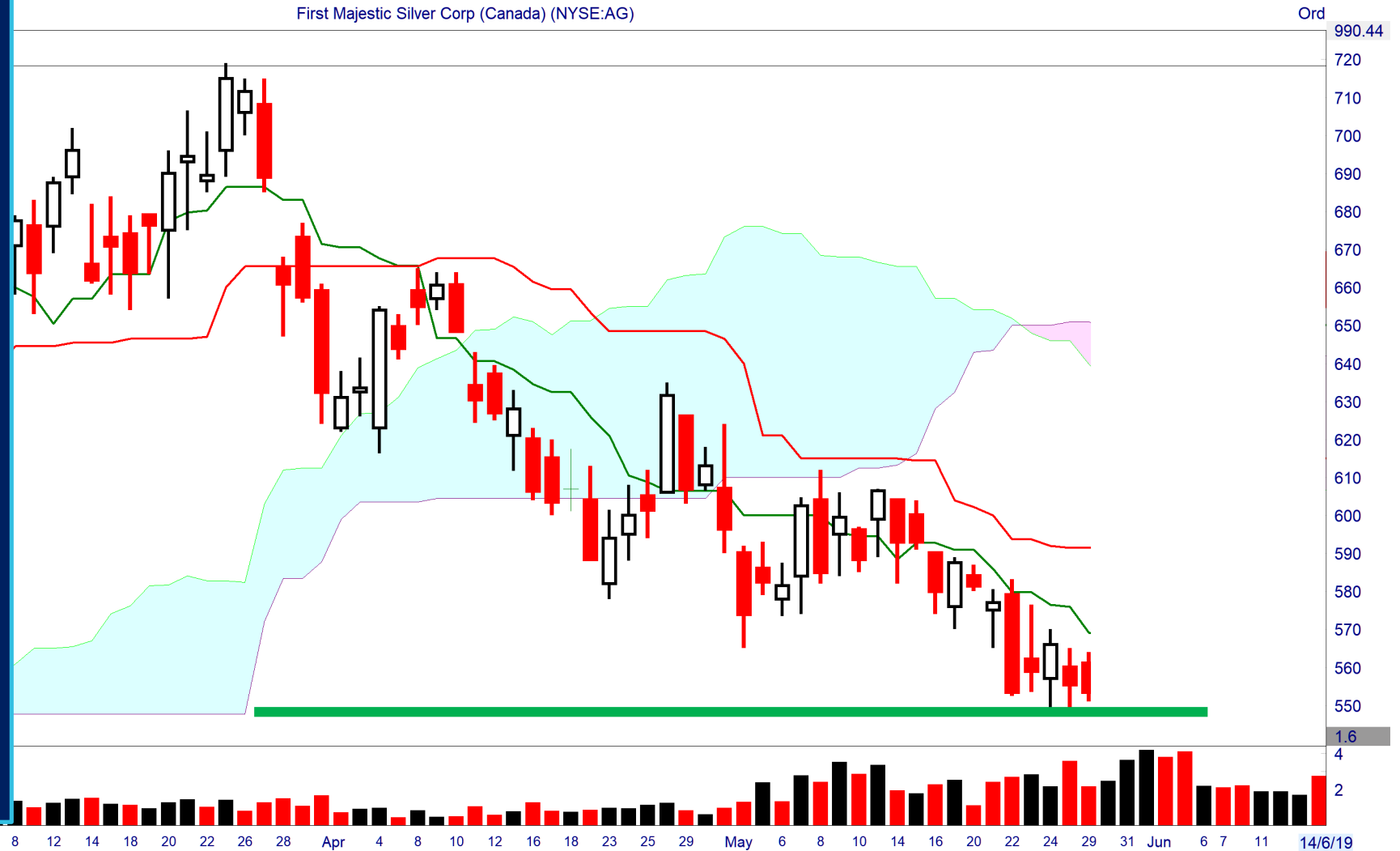
# Cloud Touch<sup>TM</sup> Strategy

# SETUP – First Majestic Silver AG



## SET UP ON DAILY CHART

1. Trend is DOWN
2. Downside Momentum slowing
3. Price Below the cloud
4. Price Stopping and Stabilising

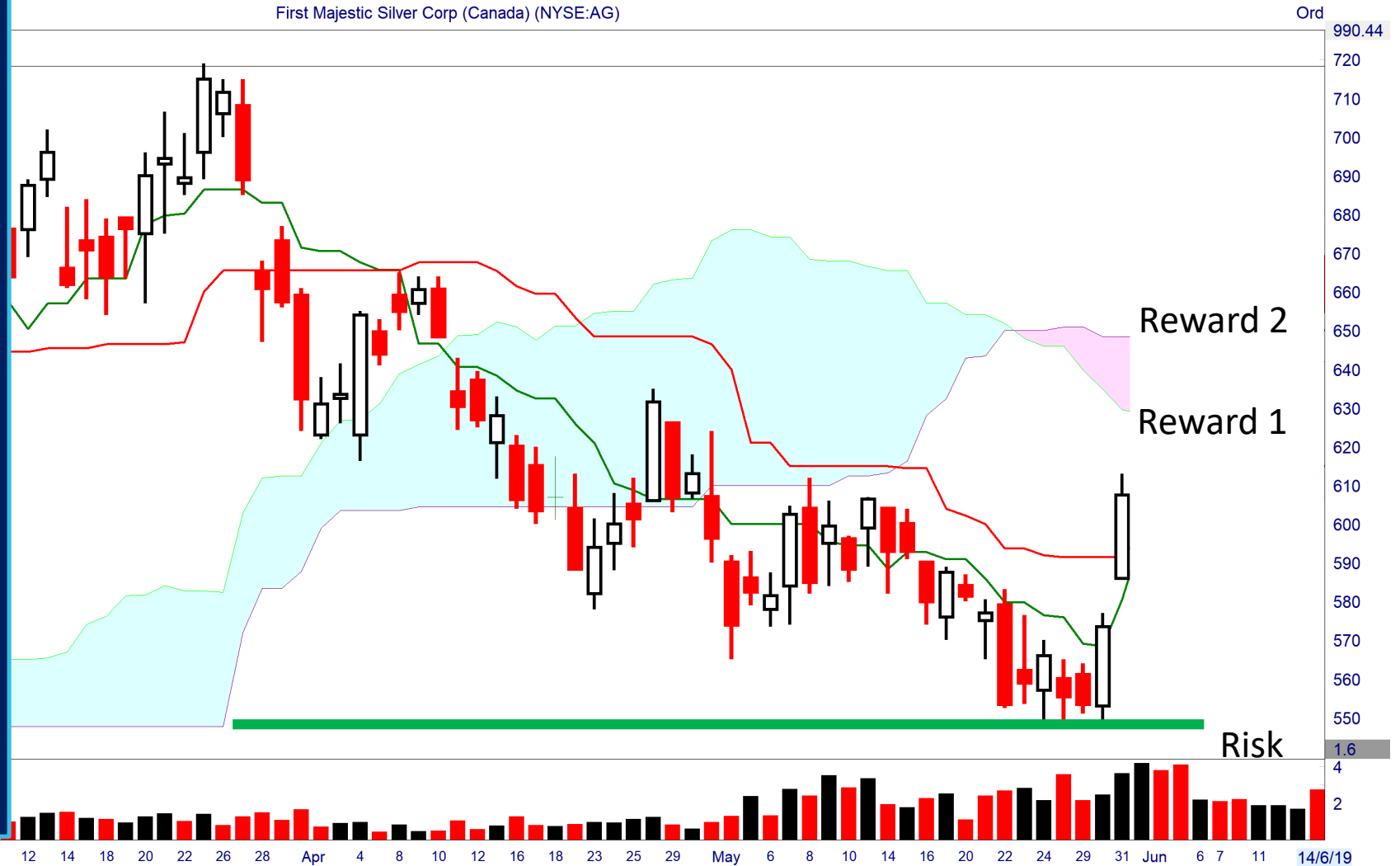


# TRIGGER – First Majestic Silver AG

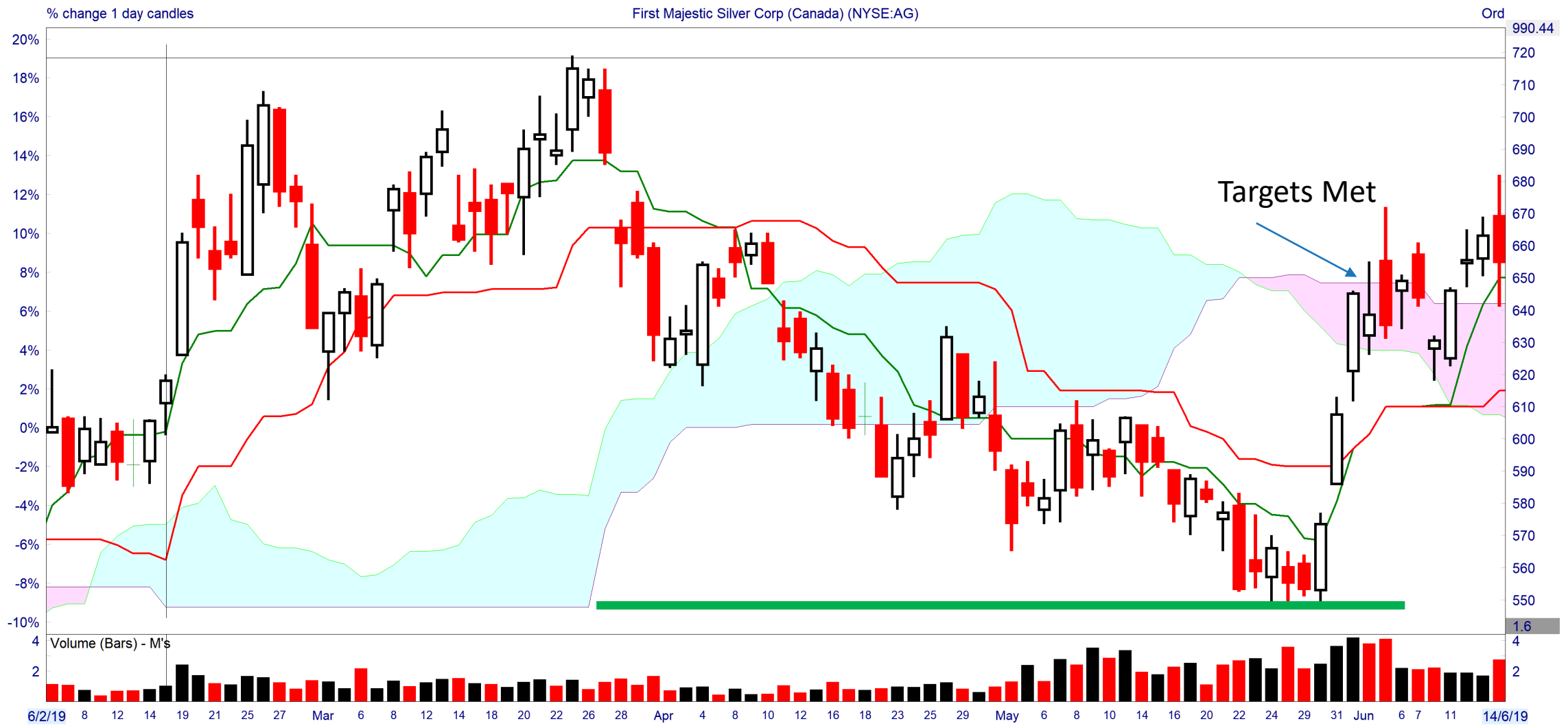


## TRIGGER

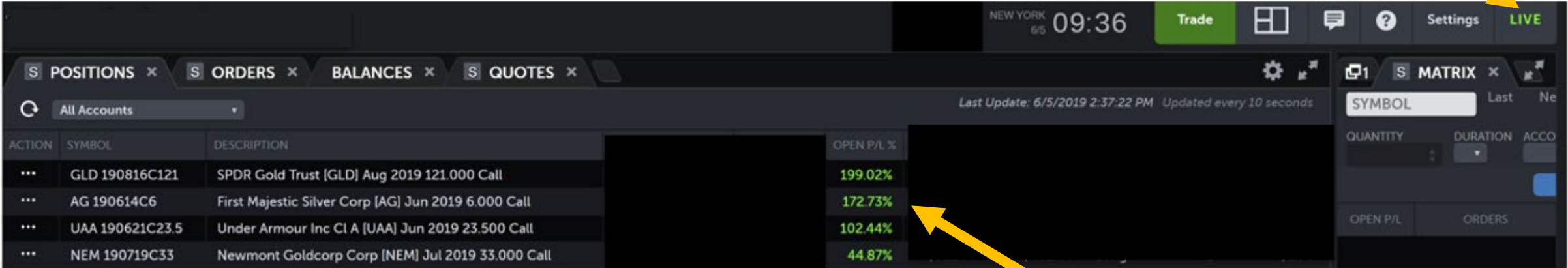
- Price Crosses Up
- Bullish Engulfing
- Demand Increasing



# Targets Met – First Majestic Silver AG



# Result - First Majestic Silver AG



NEW YORK 6/5 09:36 Trade [Grid Icon] [Chat Icon] [Help Icon] Settings LIVE

POSITIONS ORDERS BALANCES QUOTES

All Accounts Last Update: 6/5/2019 2:37:22 PM Updated every 10 seconds

| ACTION | SYMBOL          | DESCRIPTION   | OPEN P/L % |
|--------|-----------------|---|------------|
| ...    | GLD 190816C121  | SPDR Gold Trust [GLD] Aug 2019 121.000 Call         | 199.02%    |
| ...    | AG 190614C6     | First Majestic Silver Corp [AG] Jun 2019 6.000 Call | 172.73%    |
| ...    | UAA 190621C23.5 | Under Armour Inc Cl A [UAA] Jun 2019 23.500 Call    | 102.44%    |
| ...    | NEM 190719C33   | Newmont Goldcorp Corp [NEM] Jul 2019 33.000 Call    | 44.87%     |

MATRIX SYMBOL Last Ne QUANTITY DURATION ACCO OPEN P/L ORDERS

# CSX Cloud Touch Strategy

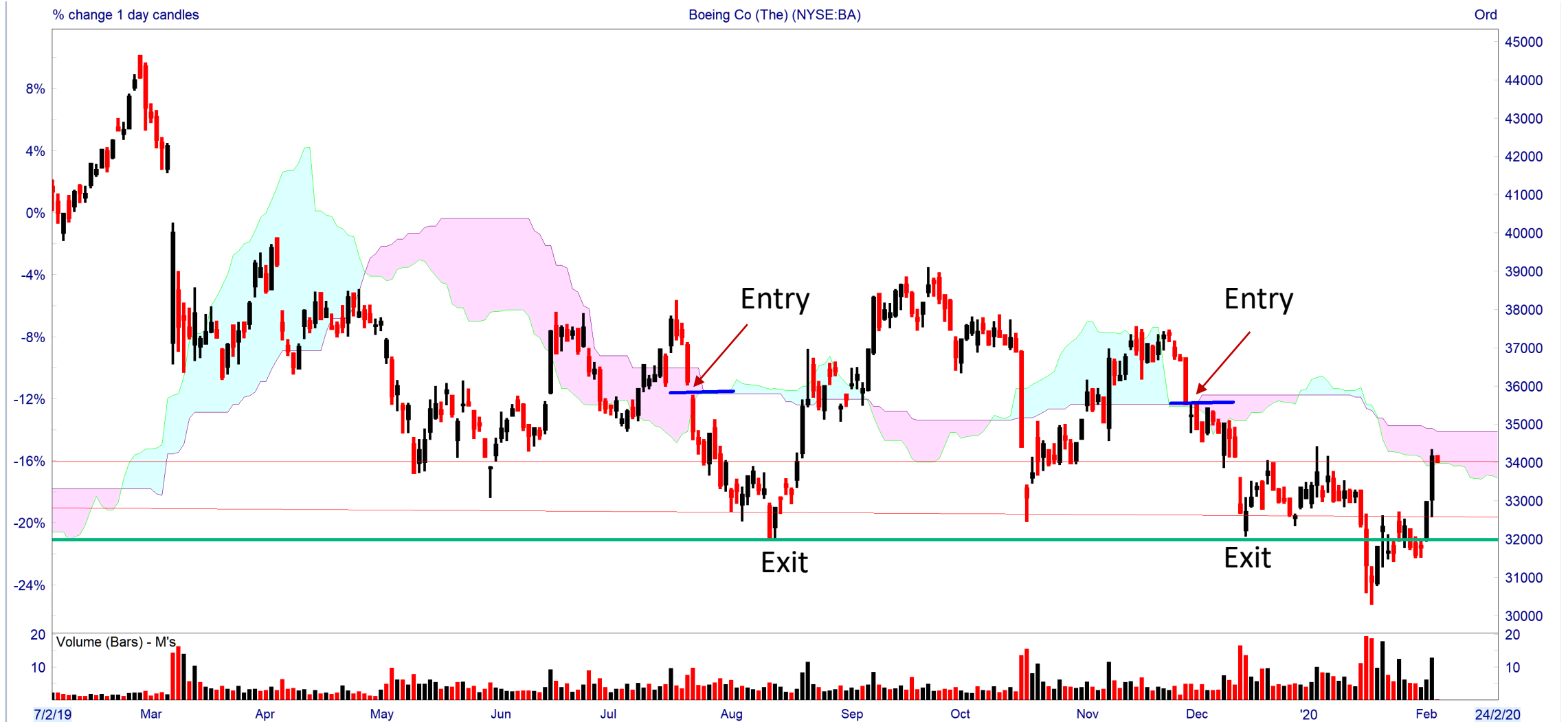




# Cloud Clear<sup>TM</sup> Strategy



# BA Cloud Clear Strategy



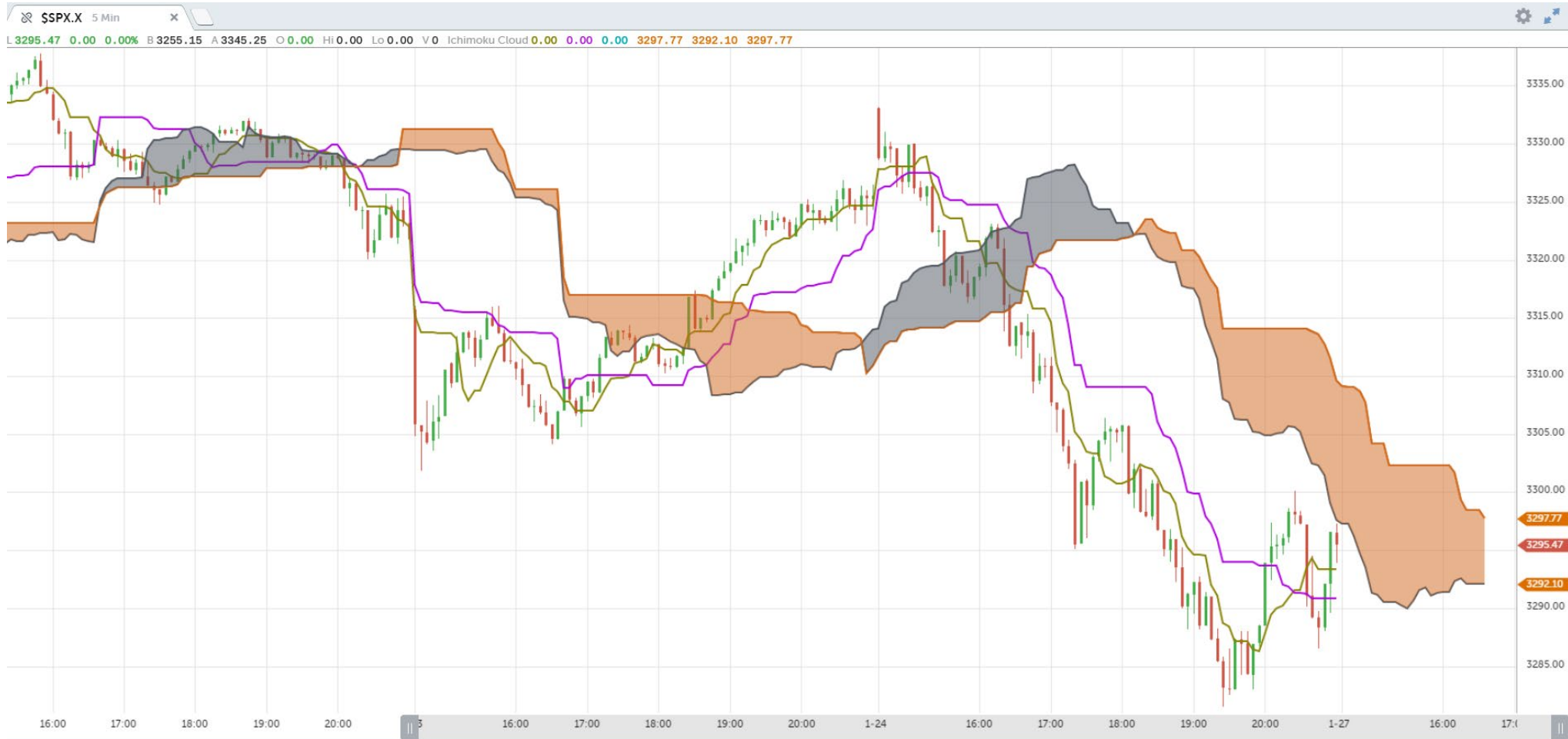
# Did Ichi Work On This Chart?





# **Does Ichimoku Work on Smaller Time frames? Or Intra Day?**

# Ichi Works – Intraday too – 24/1/20 S&P 5Min



# Intraday Trade using Ichimoku





# What We Covered Today

**How You can spot at a glance under 5 Mins.**

- **Trend and Direction**
- **Momentum**
- **Strength of Momentum**
- **Places where price can stop and reverse**
- **4 Support and resistance zones**
- **Conservative and Aggressive entry points**
- **Where to place stops**
- **When to add to a winning position**



# What We Covered Today

## 3 Majestic Strategies For Measured Returns With Minimal Risk

- **Rising Star**
- **Cloud Touch**
- **Cloud Clear**

# What If You Have More Questions At A Later Date?



**You Can Reach out to me**

**Email – [Sankar.Sharma@RiskRewardReturn.com](mailto:Sankar.Sharma@RiskRewardReturn.com)**

**LinkedIn – <https://www.linkedin.com/in/sankar-sharma/>**





RISK REWARD RETURN  
LEARN MASTER PROSPER

# Q & A Time

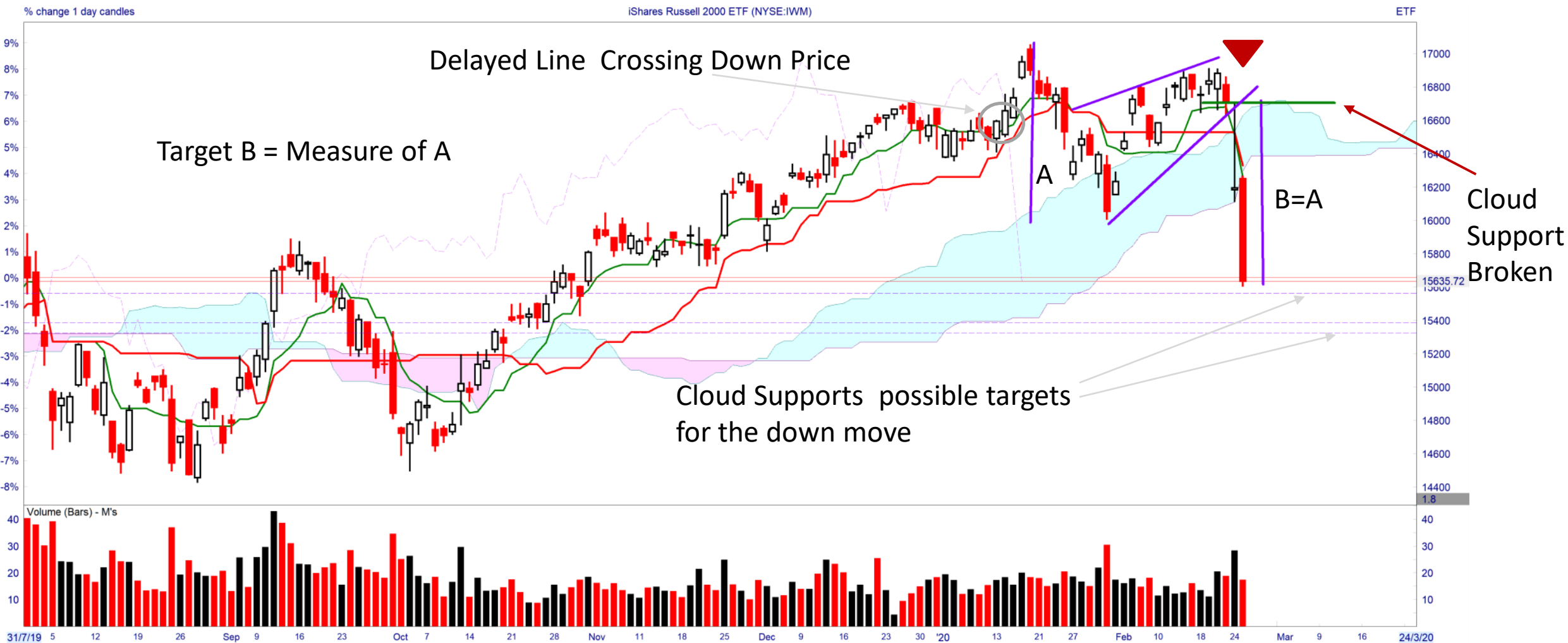


RISK REWARD RETURN  
LEARN MASTER PROSPER

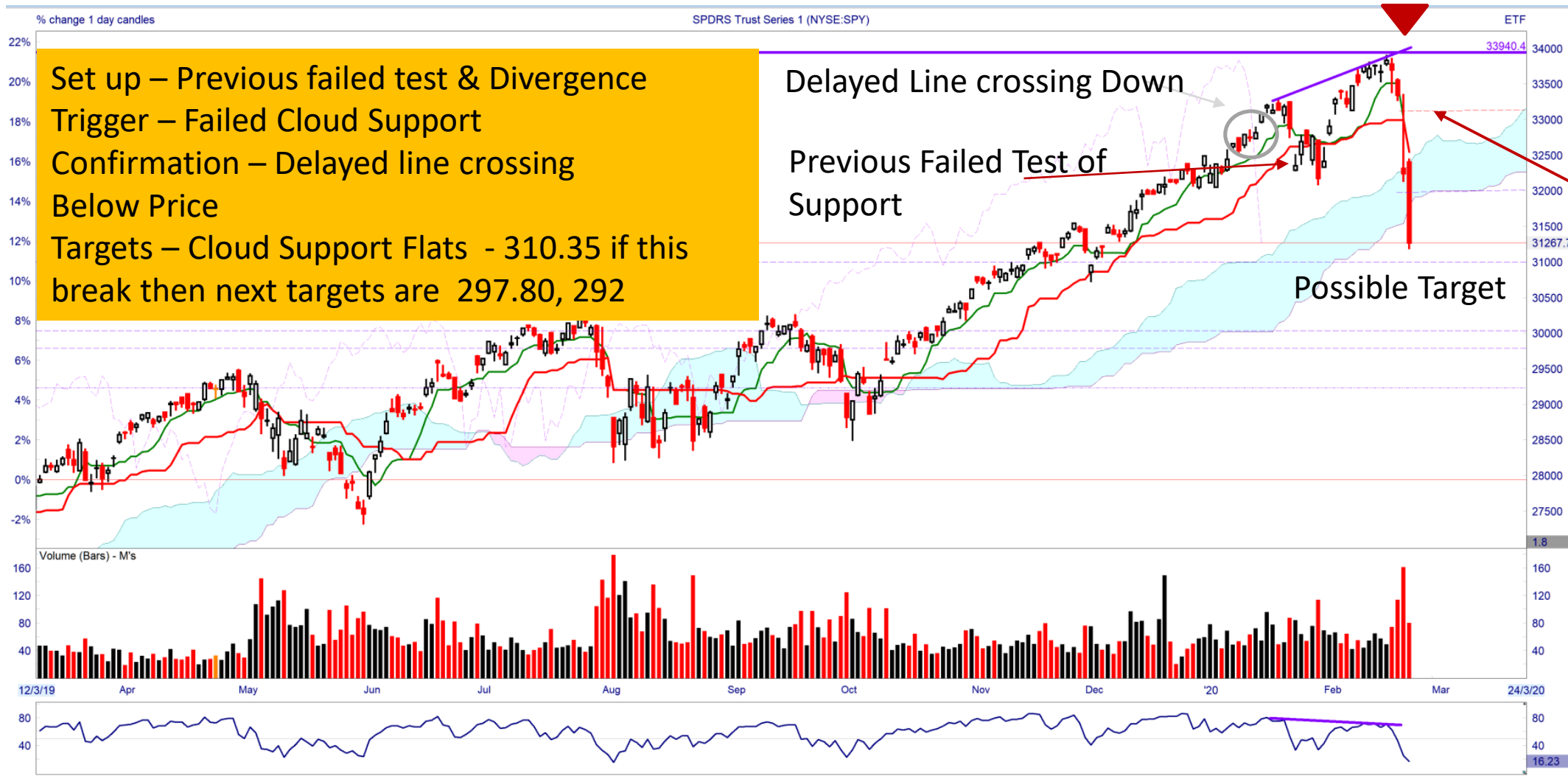
# Trades To Discuss If Time Permits or if No Questions



# IWM Targets



# SPY Targets and Levels



Set up – Previous failed test & Divergence  
 Trigger – Failed Cloud Support  
 Confirmation – Delayed line crossing  
 Below Price  
 Targets – Cloud Support Flats - 310.35 if this  
 break then next targets are 297.80, 292

Delayed Line crossing Down  
 Previous Failed Test of  
 Support

Possible Target

Cloud Support  
 Broken

# DIA Targets and Levels



% change 1 day candles

SPDR Dow Jones Industrial Average ETF Trust (NYSE:DIA)

ETF

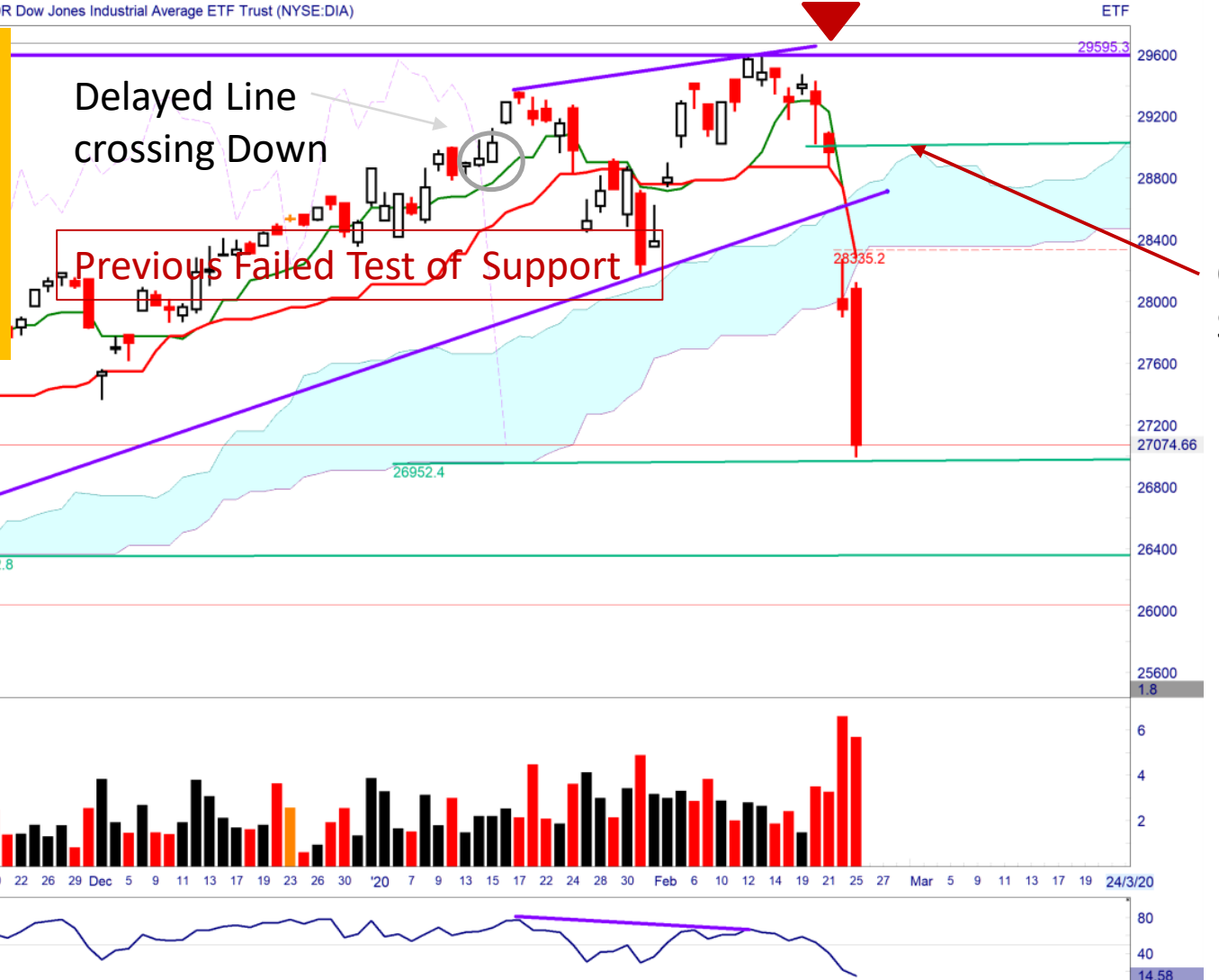
Set up – Previous failed test & Divergence

Trigger – Failed Cloud Support

Confirmation – Delayed line crossing

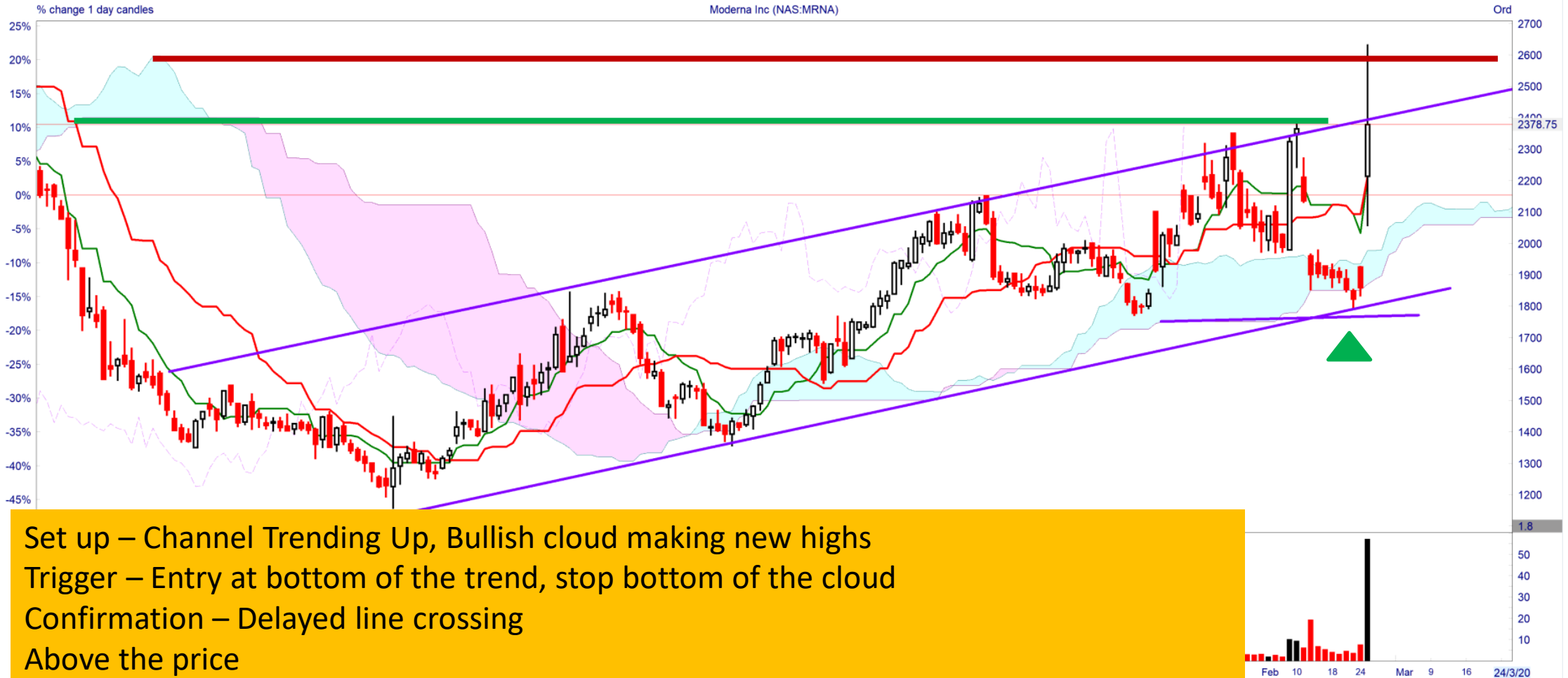
Below Price

Targets – Cloud Support Flats - 26952 if this break then next targets are 26352



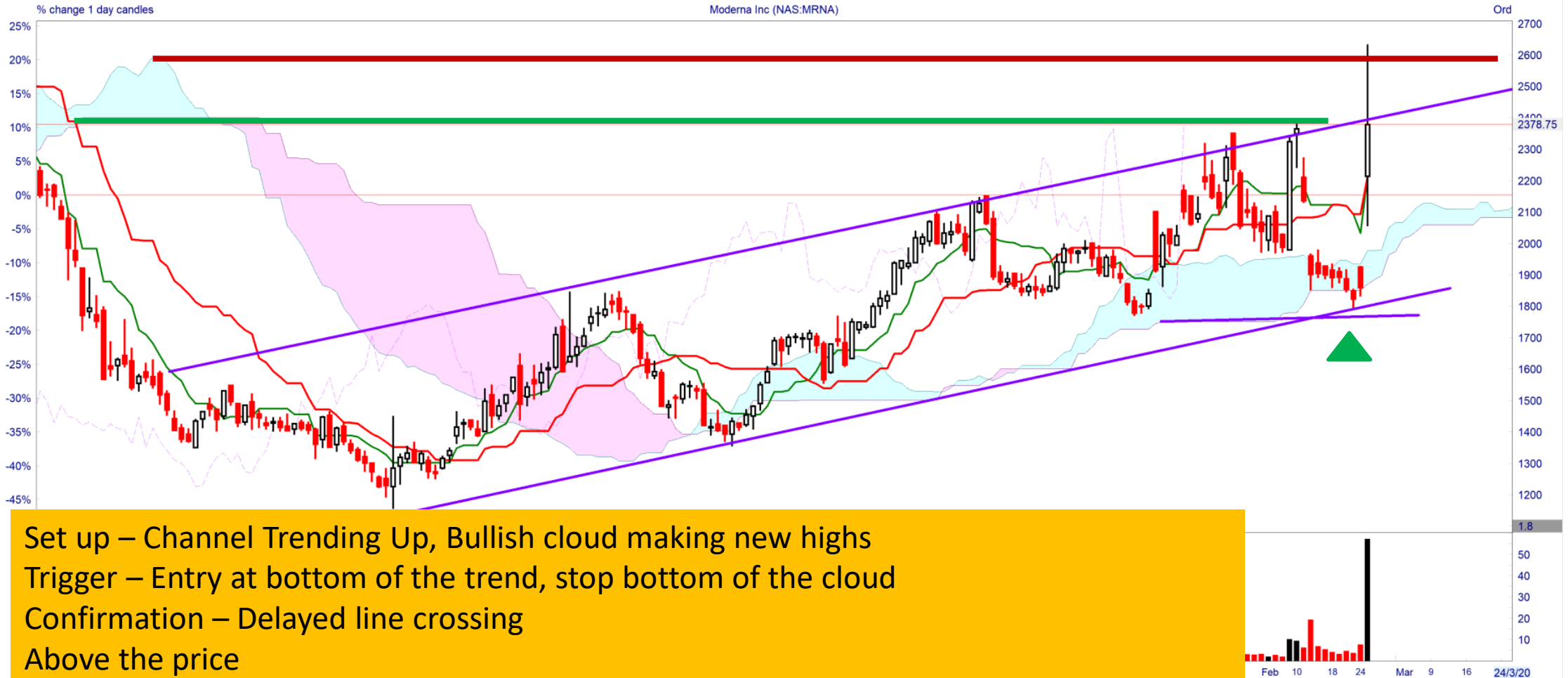
Cloud Support Broken

# Corona Virus Trade – Moderna - MRNA



Set up – Channel Trending Up, Bullish cloud making new highs  
 Trigger – Entry at bottom of the trend, stop bottom of the cloud  
 Confirmation – Delayed line crossing  
 Above the price  
 Targets – Hidden target \$24 and top of the cloud target \$26

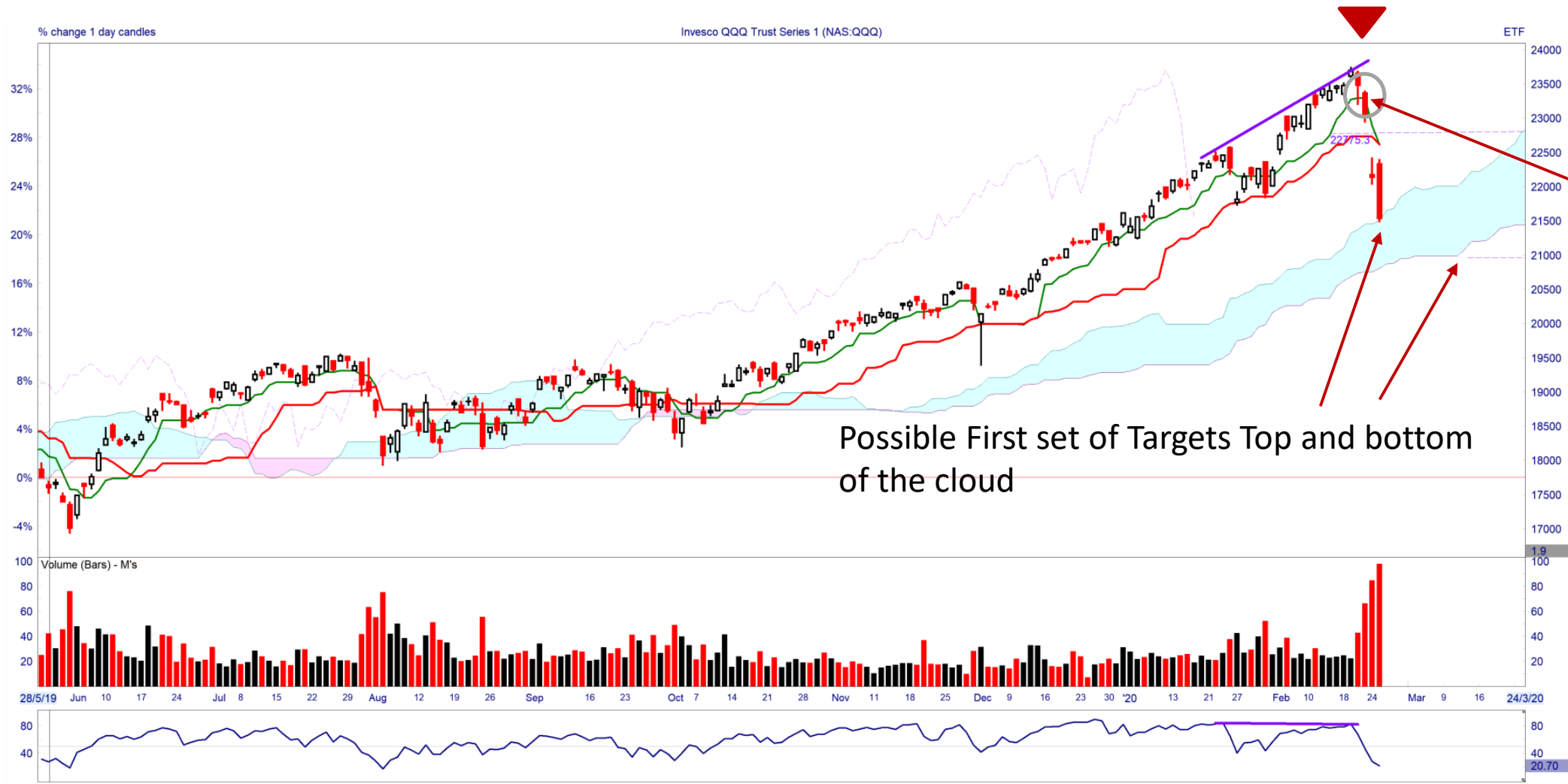
# Corona Virus Trade – Moderna - MRNA



Set up – Channel Trending Up, Bullish cloud making new highs  
 Trigger – Entry at bottom of the trend, stop bottom of the cloud  
 Confirmation – Delayed line crossing  
 Above the price  
 Targets – Hidden target \$24 and top of the cloud target \$26



# QQQ Levels



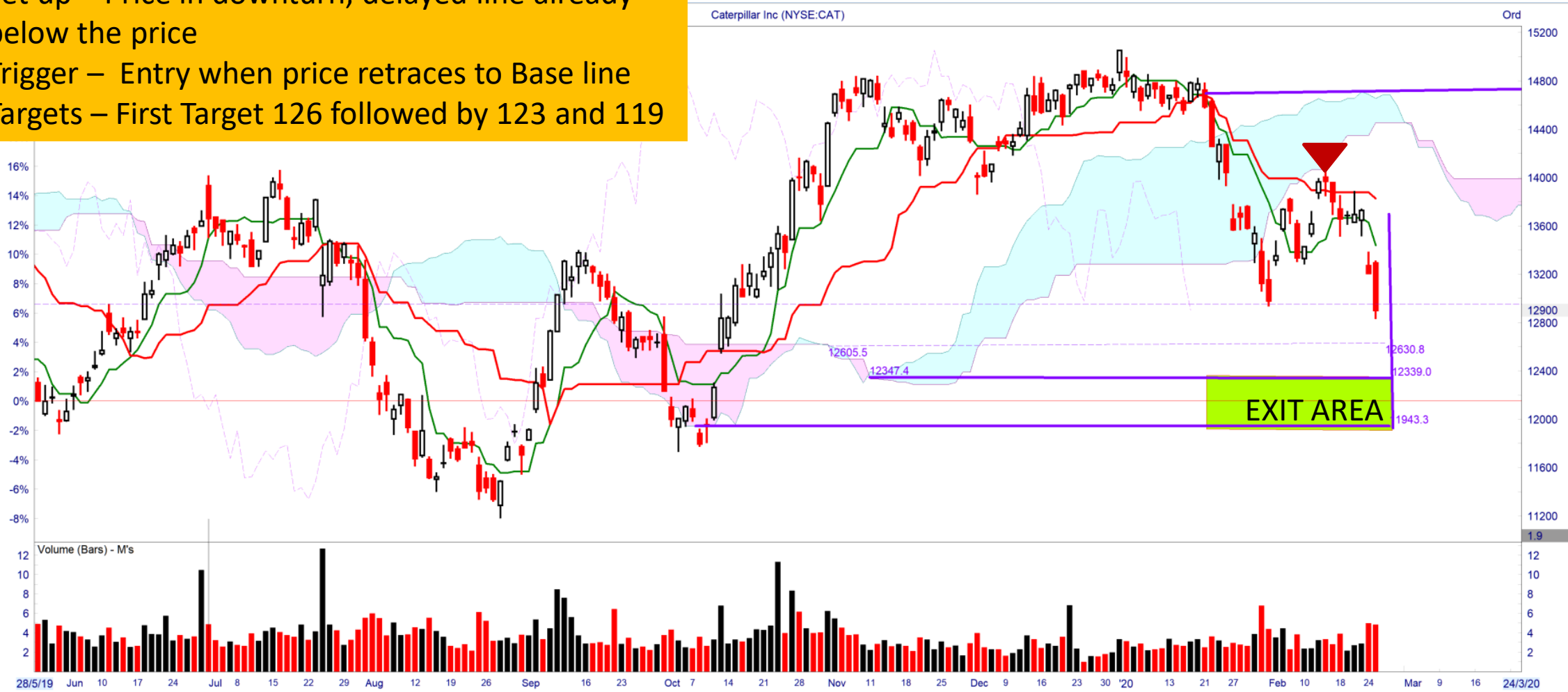
Short Entry when 'Flat' Turning line was broken

Possible First set of Targets Top and bottom of the cloud



# Caterpillar Targets

Set up – Price in downturn, delayed line already below the price  
 Trigger – Entry when price retraces to Base line  
 Targets – First Target 126 followed by 123 and 119





# FAQ Summary

- **Can we use Ichimoku on Futures?**
  - In This Presentation Options are used to demonstrate the power of Ichi but you can use them to trade futures etc. as well.
- **What time frame is best?**
  - It depends on your trading time horizon e.g. swing trader can use Daily chart
- **Does it work for Bitcoin as it is 24hour?**
  - We don't trade bitcoin but Yes it does as long as you have access to 24-hour chart
- **Do we need to use ADX for momentum check?**
  - No because that information is already given to us by the short term (Ichi turning line) and medium term (Ichi base line)
- **What if we don't like to use the default settings?**
  - You can certainly try optimizing to suite your needs and test to make sure it is better than default

# What If You Have More Questions At A Later Date?



## You Can Reach out to me

Email – [Sankar.Sharma@RiskRewardReturn.com](mailto:Sankar.Sharma@RiskRewardReturn.com)

LinkedIn – <https://www.linkedin.com/in/sankar-sharma/>

Website – <https://www.RiskRewardReturn.com>



RISK REWARD RETURN  
LEARN MASTER PROSPER